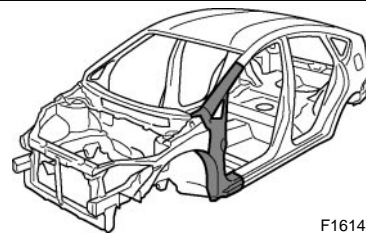


FRONT BODY PILLAR (CUT)

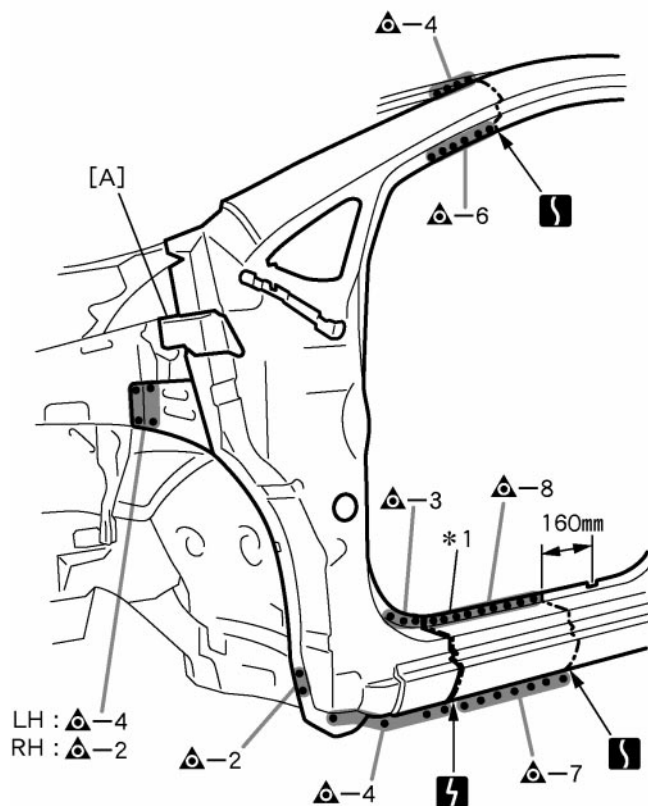
REPLACEMENT

With the cowl top side panel and cowl top inner side panel removed.

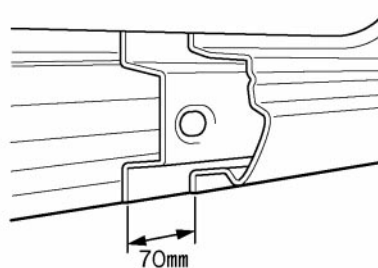
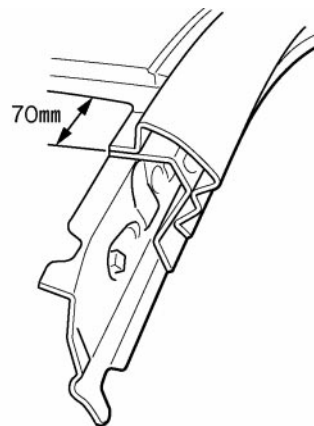


F16148A

REMOVAL



LH : -4
RH : -2



F16148

POINT

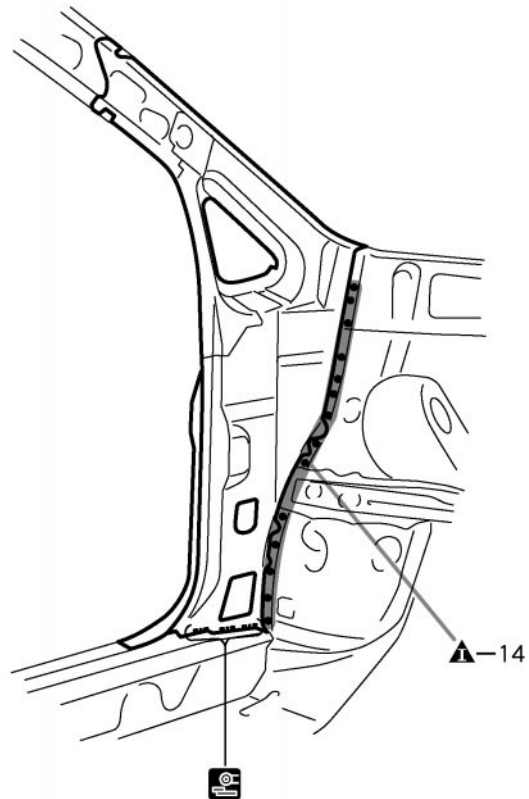
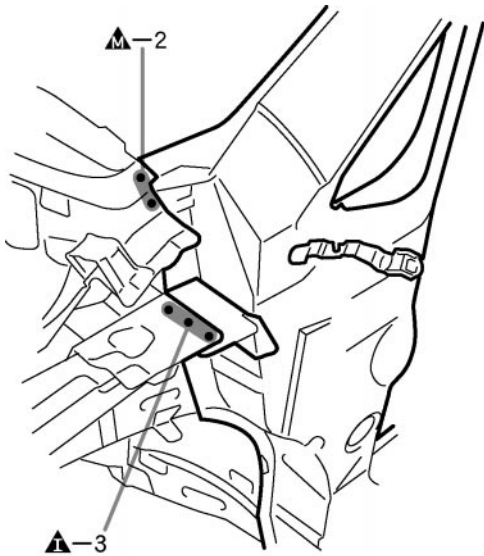
- 1 *1 : This part of the outer panel is reused, because the rocker panel section is cut off at the rear position behind the supplied parts cut position of the outer panel.
- 2 Replace the [A] at the same time.

PART NAME

[A] Cowl Top Side Reinforcement

70mm (2.76in.)

160mm (6.30in.)



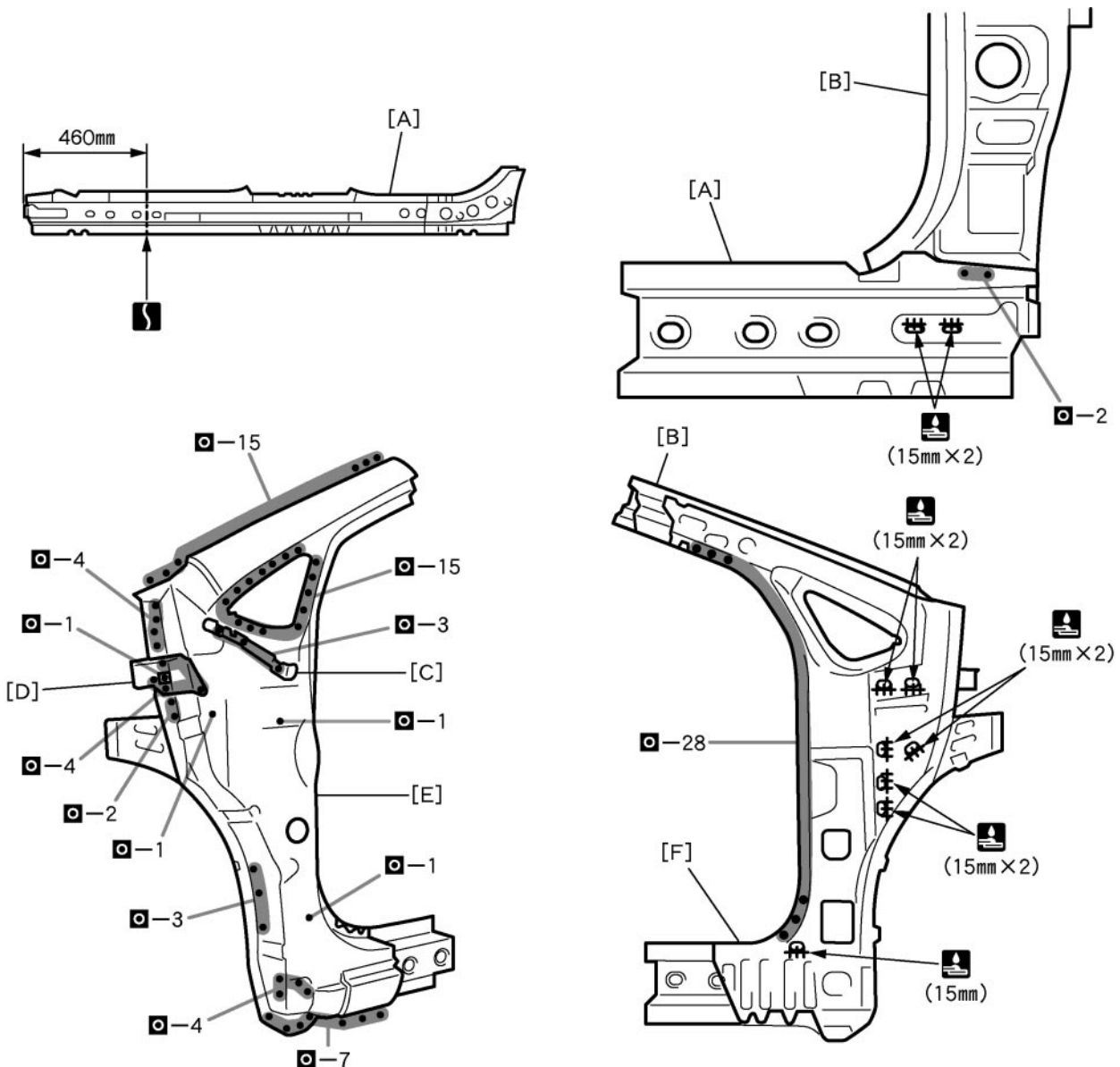
F16149

POINT

- 1 Remove the remaining foamed from the vehicles side.

INSTALLATION

- Temporarily install the new parts and measure each part of the new parts in accordance with the body dimension diagram. (See the body dimension diagram)
- Inspect the fitting of the related parts around the new parts before welding. This affects the appearance of the finish.
- After welding, apply the polyurethane foam to the corresponding parts.
- After welding, apply body sealer and under-coating to the corresponding parts.
- After applying the top coat layer, apply anti-rust agent to the inside of the necked section structural weld spots.



F16150

POINT

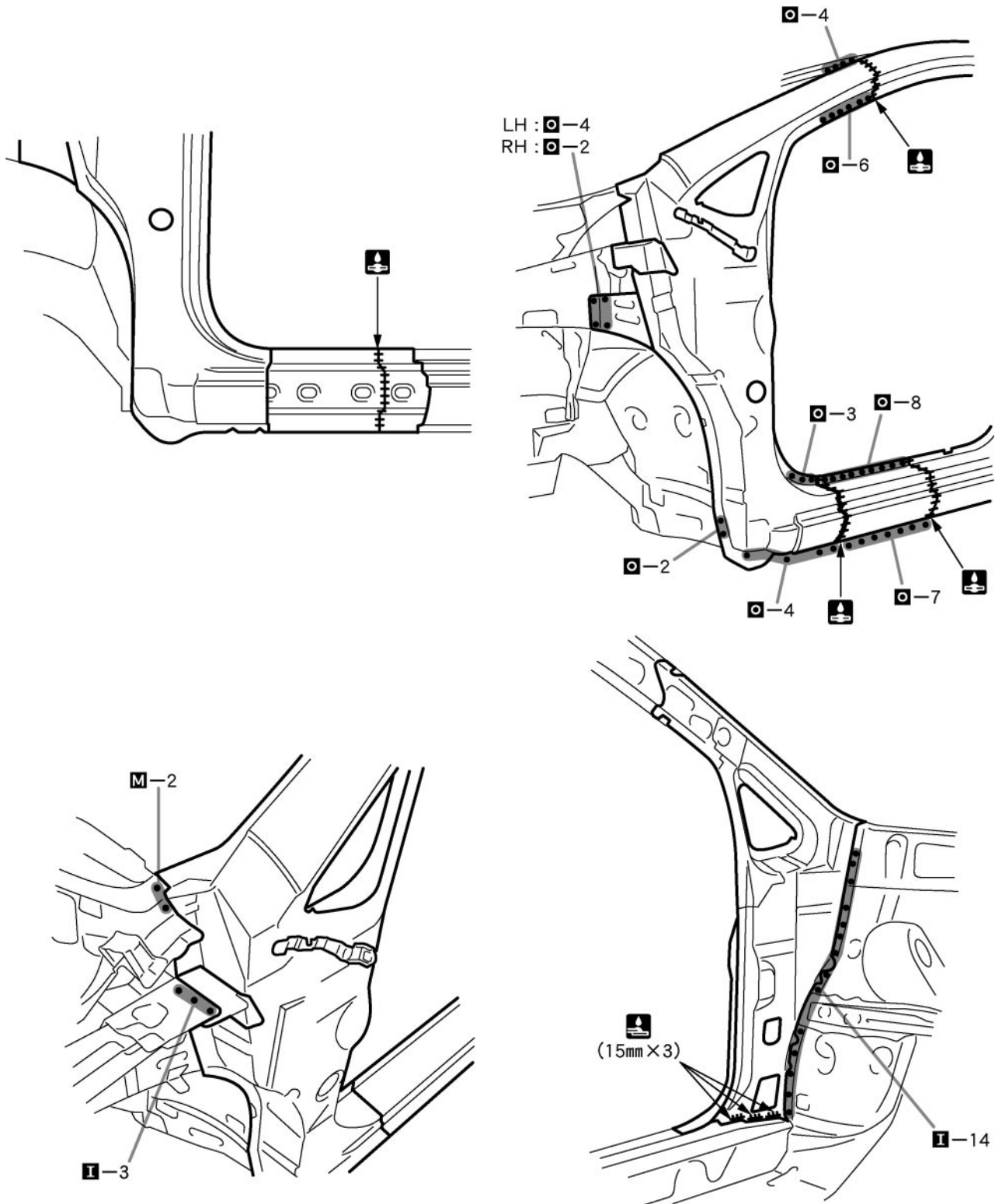
- 1 Before temporarily installing the new parts, weld the [A], [B], [C], [D], [E], and [F] with standard points.

PART NAME

- | | |
|-------------------------------------|---|
| [A] Rocker Outer Reinforcement | [B] Front Body Pillar Lower Reinforcement |
| [C] Front Fender Rear No. 2 Bracket | [D] Cowl Top Side Reinforcement |
| [F] Front Body Upper Inner Pillar | [E] Outer Pillar |

460mm (18.11in.)

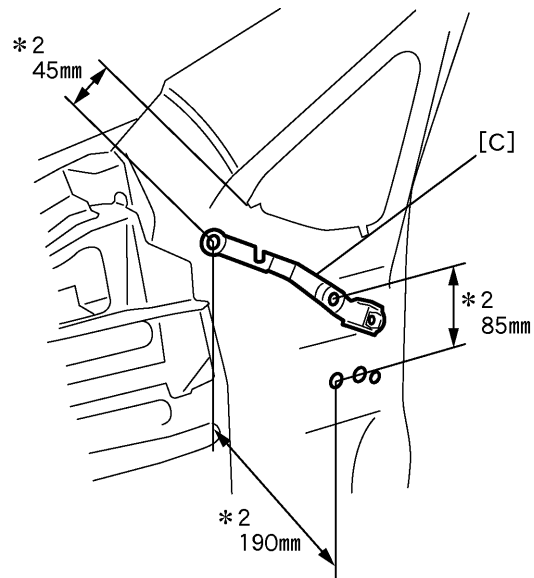
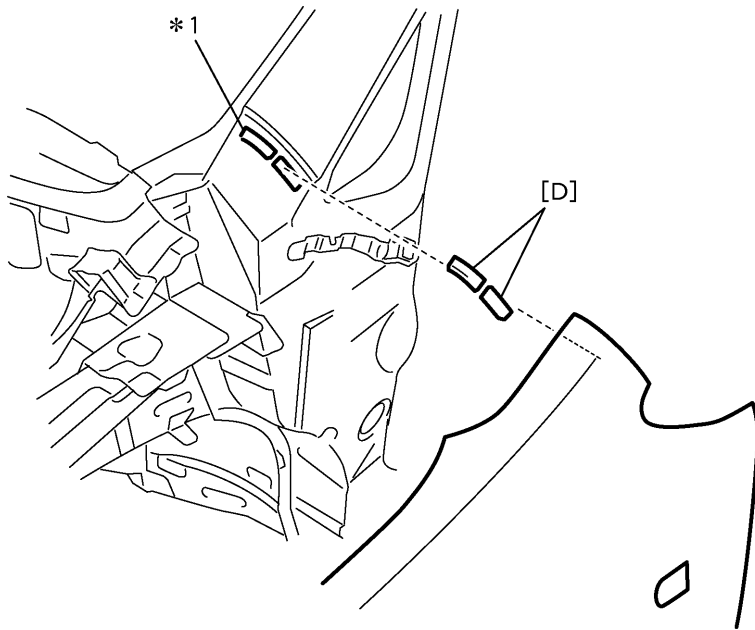
15mm (0.59in.)



F16151

POINT

- 1 Inspect the fitting of the front door, front fender and windshield glass, etc., before welding, since this affects the appearance of the finish.

**POINT**

- 1 *1: Area where [D] is to be installed. *2: Reference value
- 2 Place the front fender. For installation of [D], measure the distance between the front fender and *1. Select a thickness of [D] from 7mm, 7.5mm and 8mm.
- 3 Fit the front fender, pushing down the attached [D], and checking that it does not rattle.

HINT:

- 1) If having wobbles, change the [D] to the thicker one. Also, check the alignment of the front fender again.

PART NAME

[C] Front Fender Rear No.2 Bracket [D] Front Fender Spacer

7mm (0.28in.) 7.5mm (0.30in.) 8mm (0.31in.) 45mm (1.77in.) 85mm (3.35in.) 190mm (7.48in.)